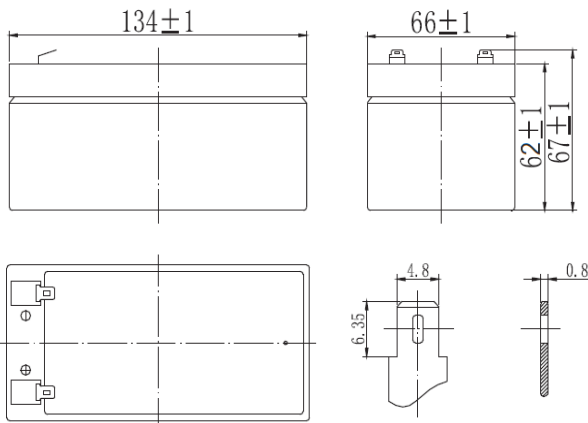


APPLICATIONS

- Uninterruptible Power Supplies (UPS)
- Electric Power Systems (EPS)
- Emergency backup power supplies
- Electronic apparatus and equipment
- Communication power supplies
- DC power supplies
- Auto control system

SPECIFICATIONS

Nominal Voltage	12 V	
Number of cells	6	
Design Floating Life (20°C)	10 years	
Dimensions	Length	134 mm
	Width	66 mm
	Height	62 mm
	Total Height	67 mm
Weight	1.22 kg	
Nominal Capacity (25°C)	20 hours rate (1.75)	3.30 Ah
	10 hours rate (1.75)	3.00 Ah
	5 hours rate (1.75)	2.80 Ah
	1 hour rate (1.65)	2.11 Ah
Internal Resistance (fully charged, 25°C)	35 mOhm	
Self Discharge	approx. 3% per month at 25°C	
Nominal Operating Temperature	25°C	
Operating Temperature range	Discharge	-15°C to 45°C
	Charge	0°C to 40°C
	Storage	-15°C to 40°C
Float Charging Voltage	2.27 to 2.30 V/cell at 25°C	
Temperature compensation	-20mV/°C	
Maximum charging current	1.00 A	
Maximum discharge current (25°C)	35 A (5 sec.)	
Short Circuit Current (25°C)	50 A	



PERFORMANCE DATA

Discharge Constant Current at 25°C (Amperes)

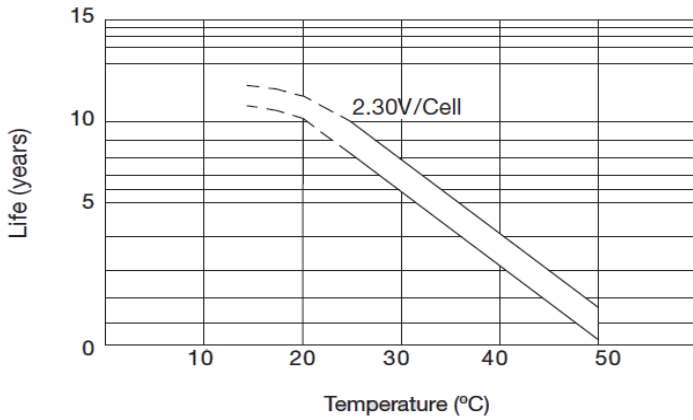
End Voltage (V/cell)	5min	10min	15min	30min	1h	2h	3h	4h	5h	8h	10h	20h
1.60V	12.5	7.87	6.23	3.47	2.15	1.16	0.84	0.67	0.56	0.36	0.32	0.18
1.65V	12.1	7.64	6.00	3.40	2.11	1.15	0.83	0.67	0.56	0.36	0.31	0.17
1.70V	11.4	7.32	5.86	3.31	2.08	1.14	0.83	0.66	0.56	0.36	0.31	0.17
1.75V	11.2	7.01	5.67	3.14	2.04	1.12	0.82	0.66	0.56	0.36	0.30	0.17
1.80V	10.3	6.61	5.27	3.07	1.99	1.10	0.80	0.64	0.54	0.35	0.30	0.17

Discharge Constant Power at 25°C (Watts/Cell)

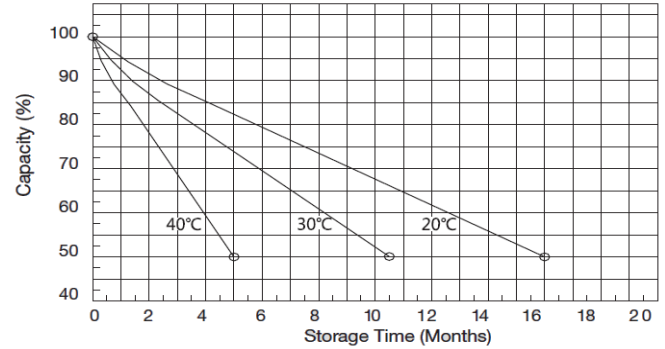
End Voltage (V/cell)	5min	10min	15min	30min	1h	2h	3h	4h	5h	8h	10h	20h
1.60V	23.3	14.7	11.7	6.65	4.13	2.23	1.65	1.32	1.15	0.75	0.63	0.34
1.65V	22.7	14.3	11.3	6.51	4.05	2.21	1.64	1.31	1.15	0.74	0.63	0.34
1.70V	22.0	13.7	11.1	6.29	3.99	2.19	1.63	1.31	1.13	0.72	0.62	0.34
1.75V	20.8	13.1	10.9	6.09	3.92	2.15	1.62	1.30	1.09	0.71	0.62	0.34
1.80V	19.5	12.4	10.2	5.83	3.71	2.12	1.57	1.26	1.06	0.70	0.61	0.33

Note: The above characteristics data can be obtained within three charge/discharge cycles.

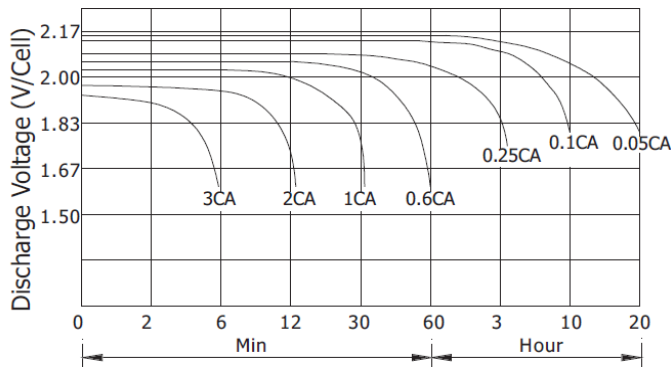
Temperature Effects on Float Life



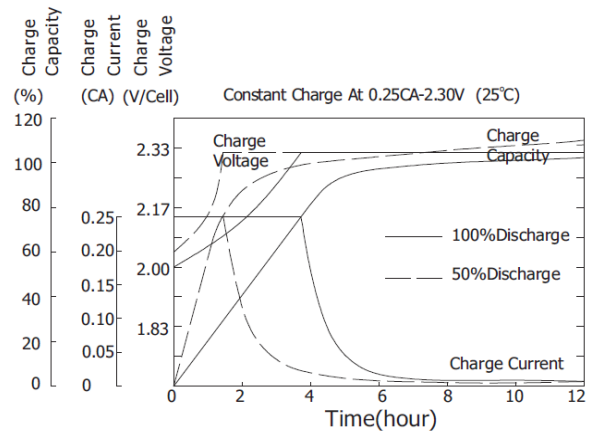
Self Discharge Characteristics



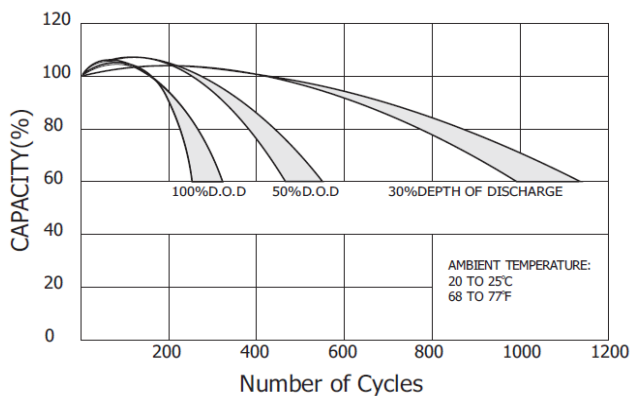
Discharge Characteristics (25°C)



Charging Characteristics (25°C)



Cycle Service Life in Relation to Depth of Discharge



Relationship Between OCV and Residual Capacity (25°C)

